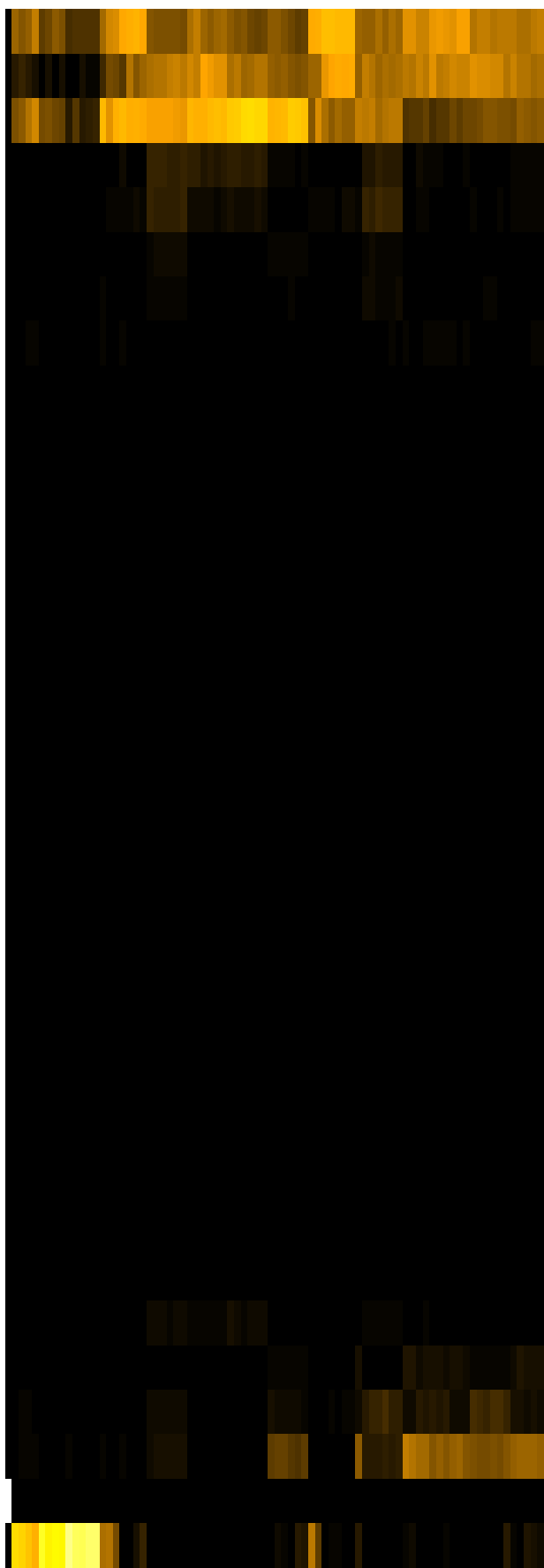
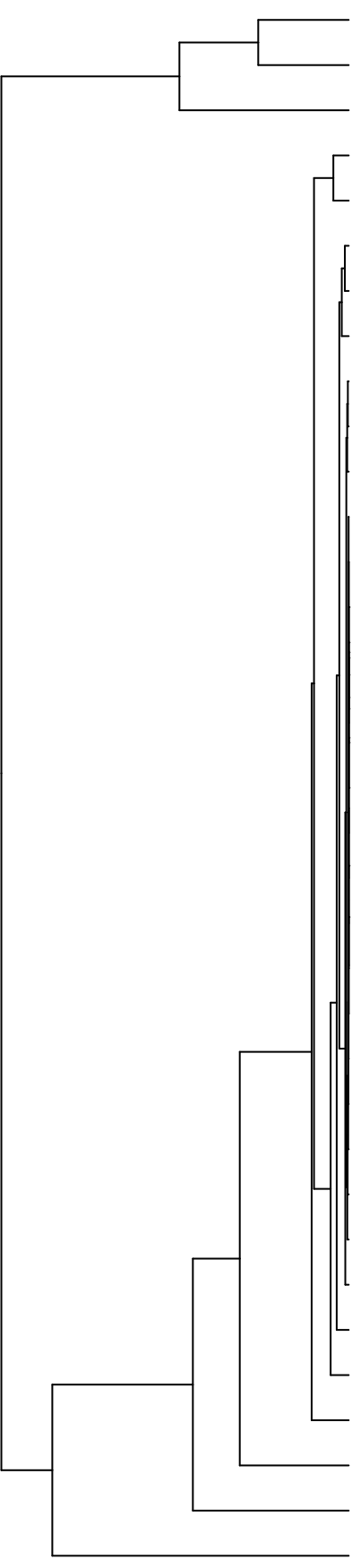


Group005
 Baseline
 Final D -PMA



- Veillonellaceae
- Pasteurellaceae
- Neisseriaceae
- Campylobacteraceae
- Porphyromonadaceae
- Gemellaceae
- Micrococcaceae
- Actinomycetaceae
- Erysipelotrichaceae
- Saccharibacteria_(TM7)_[F-1]
- Lachnospiraceae
- Staphylococcaceae
- Sphingomonadaceae
- Mycobacteriaceae
- Hymenobacteraceae
- Microbacteriaceae
- Saccharibacteria_(TM7)_[F-2]
- Rhizobiaceae
- Phyllobacteriaceae
- Comamonadaceae
- Moraxellaceae
- Weeksellaceae
- Propionibacteriaceae
- Flavobacteriaceae
- Absconditabacteria_(SR1)_[F-1]
- Atopobiaceae
- Burkholderiaceae
- Yersiniaceae
- Leptotrichiaceae
- Prevotellaceae
- Carnobacteriaceae
- Fusobacteriaceae
- Streptococcaceae
- Pseudomonadaceae
- Enterobacteriaceae

- F28914.S593
- F28914.S597
- F28914.S674
- F28914.S682
- F28914.S687
- F28914.S421
- F28914.S419
- F28914.S580
- F28914.S581
- F28914.S031
- F28914.S035
- F28914.S032
- F28914.S040
- F28914.S039
- F28914.S038
- F28914.S067
- F28914.S069
- F28914.S068
- F28914.S044
- F28914.S046
- F28914.S045
- F28914.S030
- F28914.S028
- F28914.S025
- F28914.S026
- F28914.S058
- F28914.S059
- F28914.S097
- F28914.S065
- F28914.S064
- F28914.S062
- F28914.S263
- F28914.S103
- F28914.S260
- F28914.S262
- F28914.S257
- F28914.S051
- F28914.S054
- F28914.S053
- F28914.S098
- F28914.S100

Samples

Family